



PATTERN
VENEER
COLLECTION

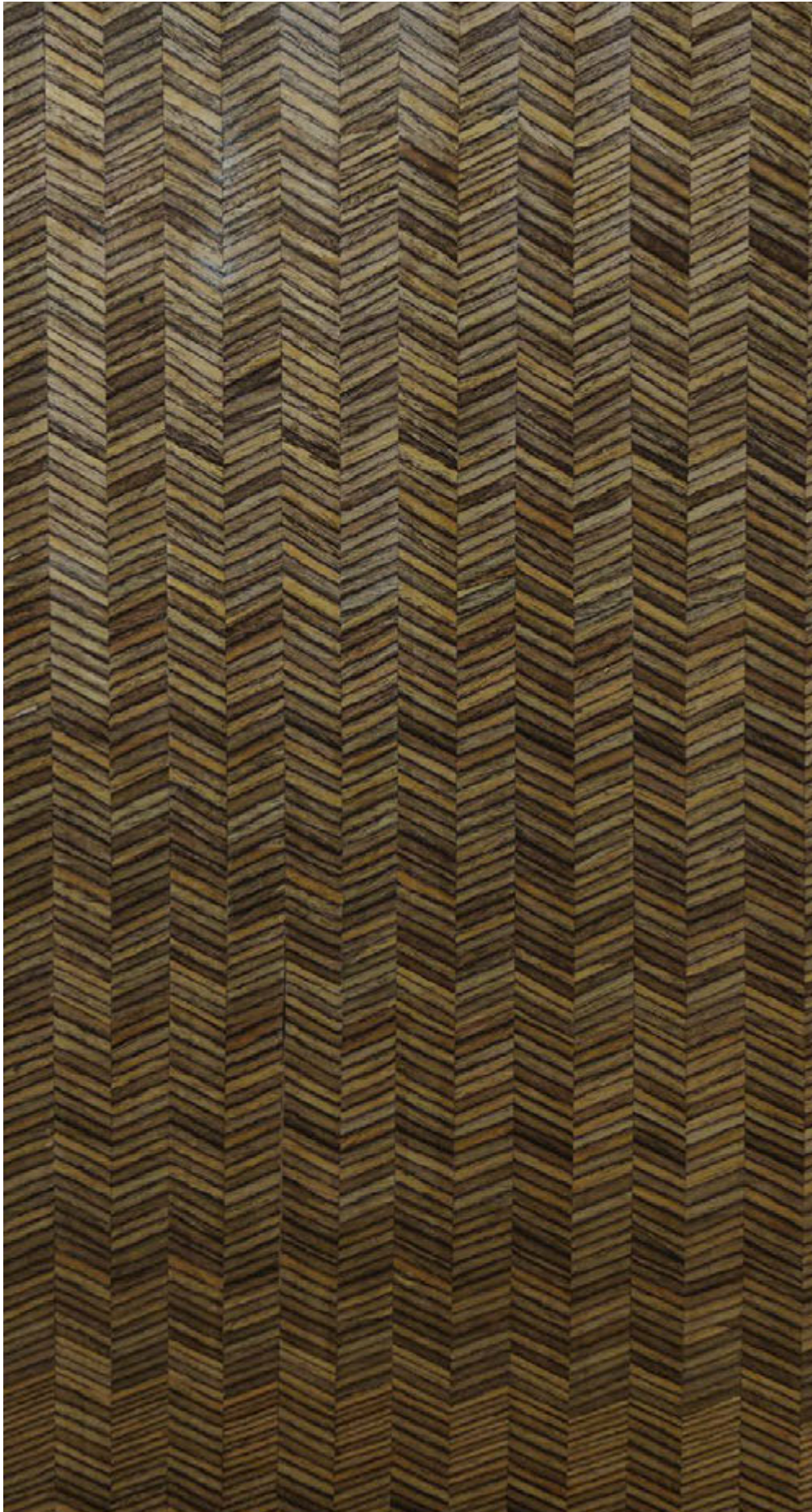


INCHY WOVEN / HALF WOVEN ZETA

Patterned Veneers add a unique character and personality to any kind of interiors. From warm cozy nooks to feature spaces, our patterned veneers feature a range of designs - from classic to quirky.

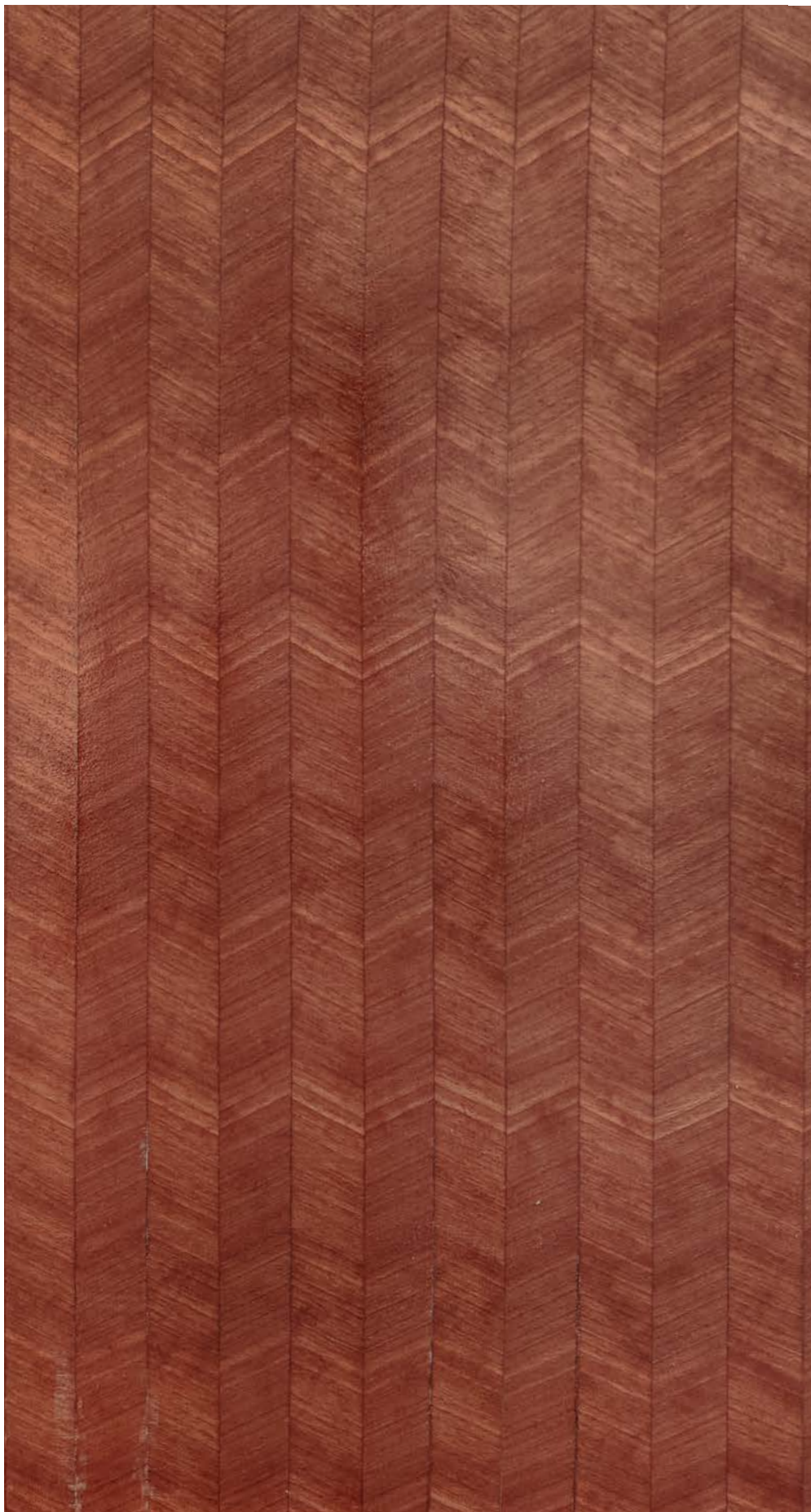


Click here to place your
Order on WhatsApp



MEXICAN OAK
ZETA





MOABI
ZETA





ROSEWOOD ZETA





MAHOGANY BURL INCHY





BOG OAK INCHY



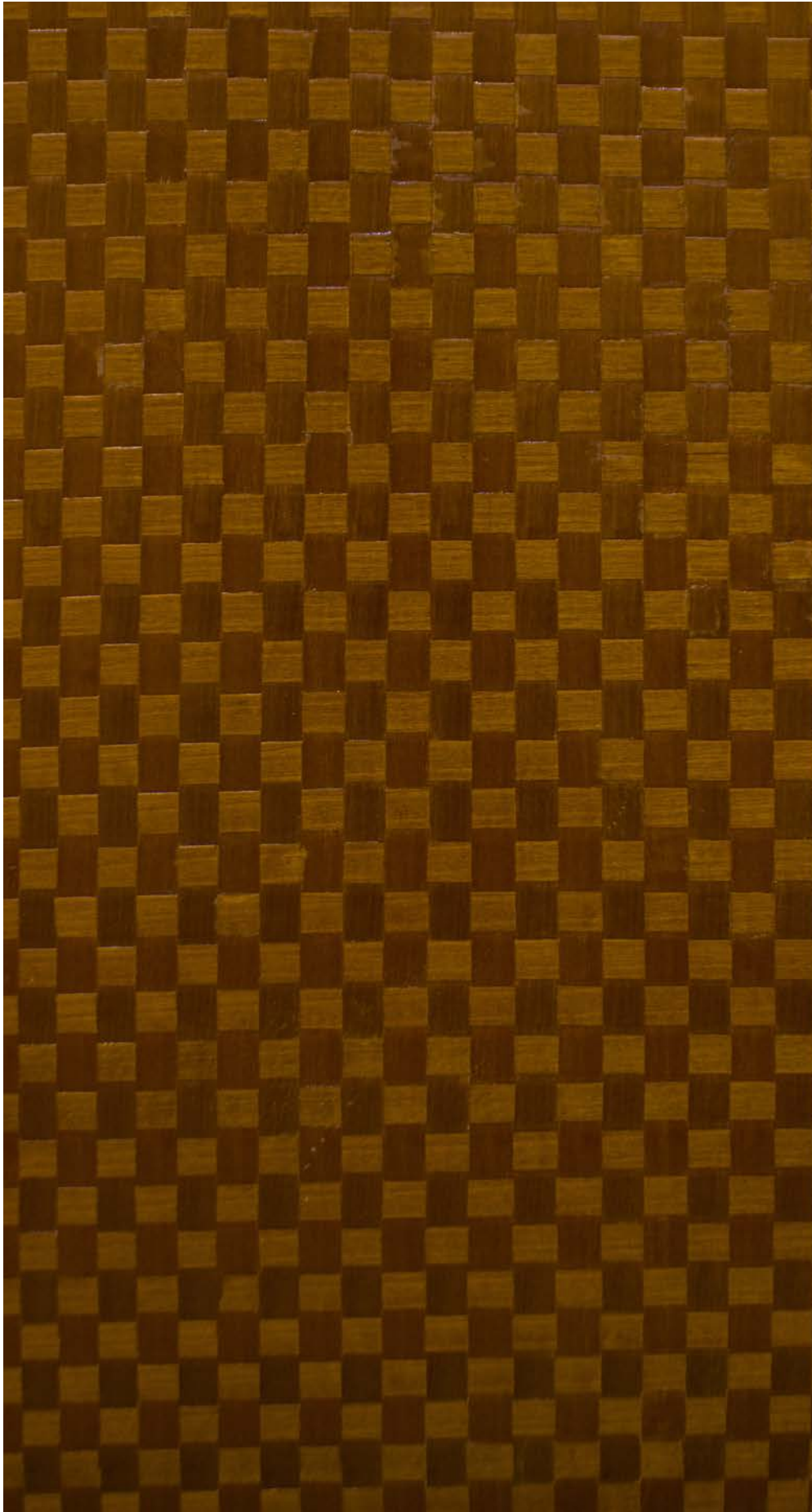


WENGE
WOVEN





GREEK WALNUT
HALF WOVEN



MOABI
WOVEN





SAPELI
WOVEN





OAK NUT
WOVEN





OAK PEARL
WHITE WOVEN





MOABI
WOVEN

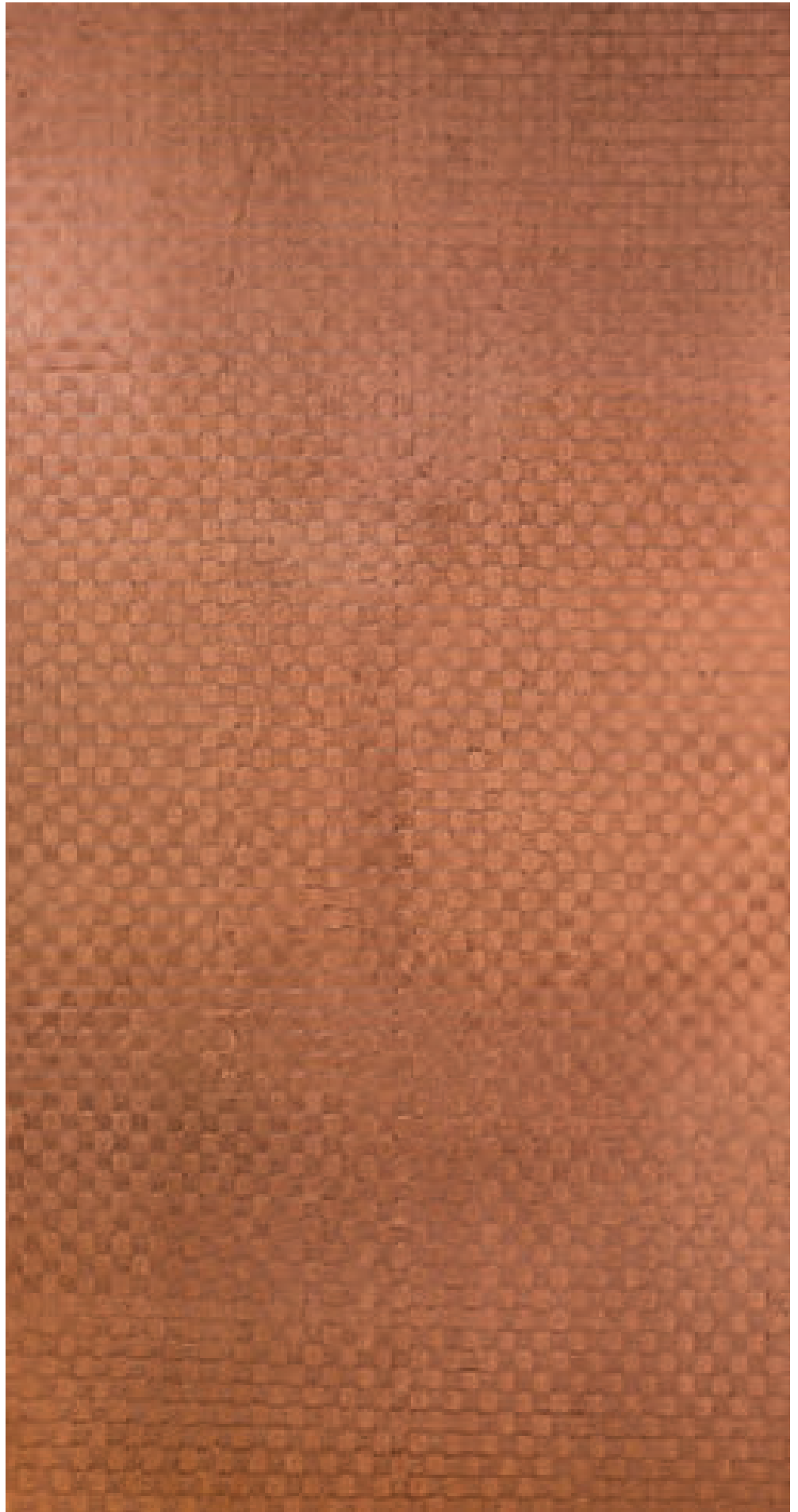




OAK COFFE
BROWN WOVEN



OAK NUT BROWN
WOVEN





AMERICAN
WALNUT
BRICK
PATTERN



TEAK BRICK
PATTERN



AFRICAN
MAHAGONY
DIAMOND



THERMO PINE
HERRINGBONE





AMERICAN
WALNUT
HERRINGBONE





ROSEWOOD
PARQUET



TEAK PARQUET





THERMO
PINE LIGHT
PARQUET



FUMED
LARCH
PARQUET

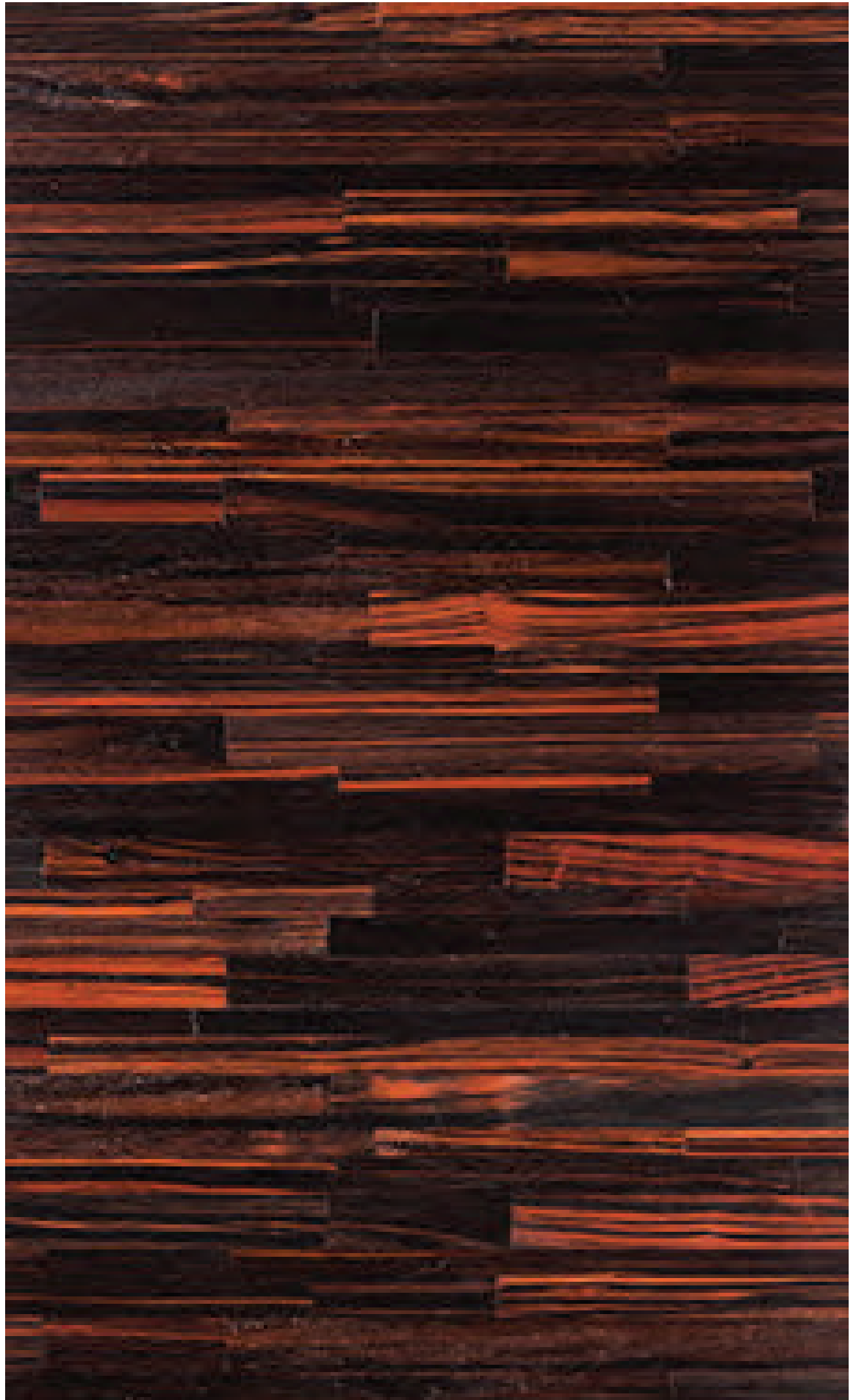




FUMED WHITE
OAK PARQUET



EBONY
PARQUET





FUMED LARCH
PARQUET



BOG ELM
PARQUET





BRAZILIAN
WALNUT PARQUET



EBONY
PARQUET 4 by 8





AMERICAN
WALNUT
PARQUET





RED CEDAR
ZETA





OAK COFFEE
BROWN ZETA





OAK FAWN
BROWN ZETA





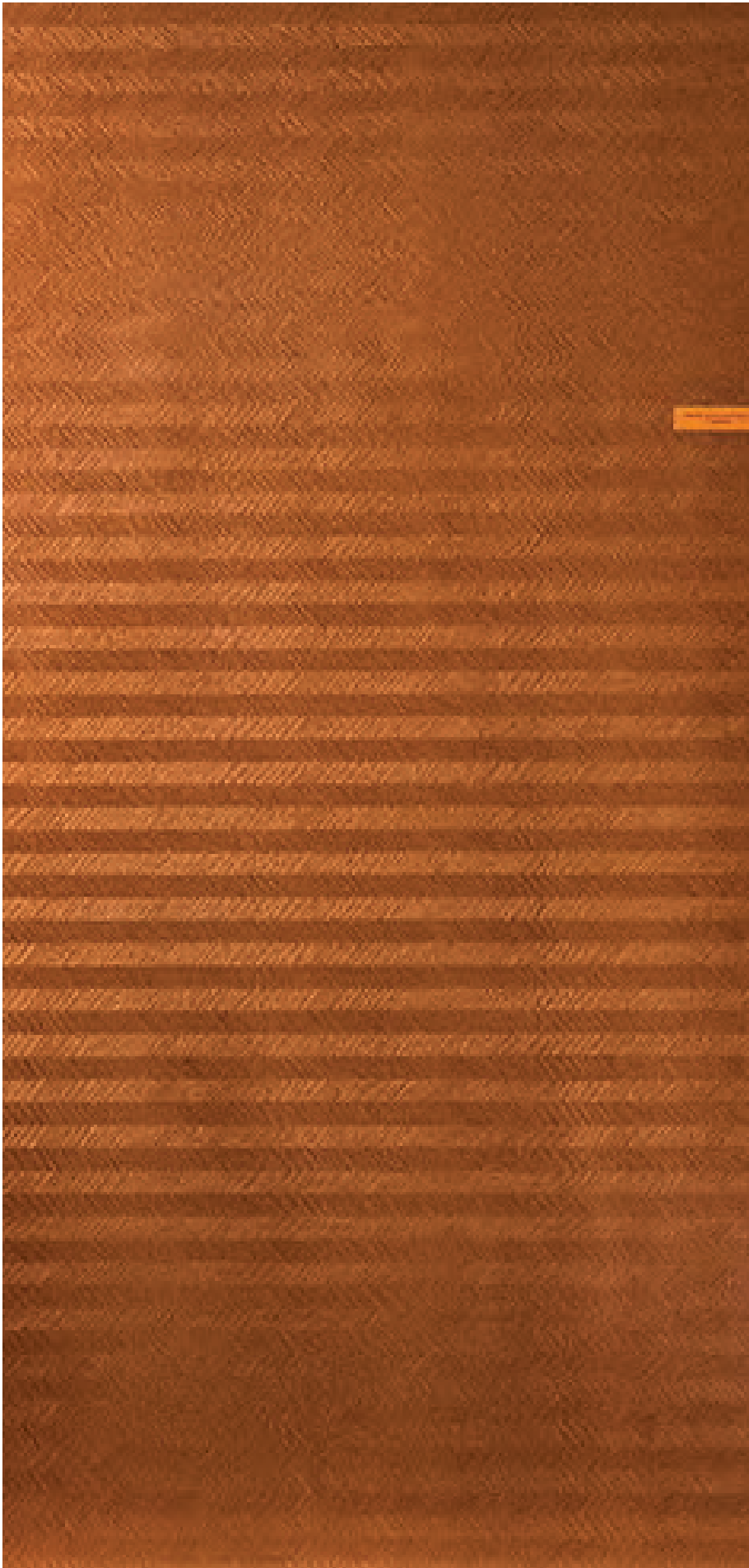
OAK NUT
BROWN ZETA





FUMED WHITE
OAK ZETA





OAK CINNAMON
ZETA





OAK COFFEE
BROWN ZETA





AMAZAQUE
ZETA



A LEGACY OF TRUST



Established in 1977, Jalaram Timber Depot started with a simple mission -- to preserve the quality and craft in harvesting the finest wood from around the world and to bring it to India in its most suitable form to find a place in your home or work environment.

Today we are proud to have over 40 years of expertise across not just veneers, but also wooden flooring, plywood and solid surfaces. Jalaram Timber Depot has consistently set the standard for these products in India and we're happy to say that we continue to do so every day.

Our extensive range of veneers are closely evaluated and curated from around the world, using the best of local materials as well as international woods.

Much like timber that needs the best conditions to grow, we have nurtured strong relationships and built a reputable network of timber suppliers across the globe, which gives us access to the highest quality of materials.

We also lead the market in solid surfaces -- Jalaram Timber Depot was the first to introduce Dupont™ Corian® Solid Surface in India, among several other brands that we are proud to partner with.

We are the authorized distributor for the Western Region for Parador -- a premium wooden flooring brand from Germany. Our plywood range is curated and certified; any brand endorsed by Jalaram Timber Depot meets the top quality standards since we go through stringent testing processes and set the quality bar for the industry.



Jalaram Timber Depot has its own veneer manufacturing unit in Kerala with over 400 varieties of veneers, which allows us to monitor and maintain a certain level of quality.

Spread over 6 acres at Vettickal, Mulanthuruthy in Ernakulam District, our state-of-the-art factory is equipped with a fully fledged slicing and peeling facility and kiln drying chambers.

The factory also houses our showroom that carries a large variety of wood, veneers and flooring products.

The Veneer Studio at Central Mumbai is designed to showcase our collection of veneers, floorings, solid surfaces, deck & cladding, kiln dried timber, live tree slabs and plywood. We're ready to welcome you.

SUSTAINABILITY & OUR FOOTPRINT



At Jalaram Timber Depot, we take our responsibility to the planet seriously. Without exception, all our raw materials are sourced from sustainable forests which are FSC and PEFC certified. In the case of imported logs and veneers, we ensure they are also sourced from FSC and PEFC certified producers, thus ensuring the ecosystem we engage with shares similar values that are important to us.

FSC and PEFC certifications are carried out with regular auditing and inspections to ensure the sustainability criteria are strictly carried out by independent authorities.

In the case of logs sourced from India, our main purchases are from Government Forest Department auctions or from plantations (replanted) which are controlled by permissions by the concerned Government Forest Department.

The Forest Department allows only collection in their forest of dead and fallen logs. Thus, we ensure non exploitation of natural products and the best use of available resources in a sustainable way.

THE PROCESS

Producing veneer is a combination of art and science. Once we select the wood based on aesthetic attributes and established parameters, we ensure it is treated correctly to preserve its features.

The manufacture of decorative veneers, decorative plywood, softwood or hardwood plywood consists of nine main processes:

Log Storage

Log Debarking And Bucking

Heating Logs

Slicing And Peeling

Drying

Glueing

Pressing In Hot Press

Plywood Cutting & Finishing
(such as Sanding)



The initial step of Debarking is accomplished by feeding logs through one of several types of debarking machines. The purpose of this operation is to remove the outer bark of the tree without substantially damaging the wood.

After the bark is removed, the logs are cut to appropriate lengths in a step known as bucking. Decorative logs are sawn into flitches, as per the requirement of annual rings and patterns, such as crown or quarter patterns.

The logs for peeling (done by rotary cutting) and the flitches for decorative veneer are then heated to improve the cutting action of the veneer lathe or slicer, thereby generating a product with better surface finish. Blocks are heated to around 93°C using a variety of methods – hot water baths, steam heat, hot water spray or a combination of the three.

After heating is complete, the logs and flitches are processed to generate veneer. A veneer lathe is used for rotary peeling of different layers of the mother board, but decorative high quality veneer is generated with a veneer slicer.

The slicer and veneer lathe both work on the same principle. The wood is compressed with a nosebar while the veneer knife cuts the blocks into veneers that are typically 0.5mm to 3.0mm thick. This thickness ensures that the veneer lasts for a long period of time in its final application.

The rotary peeled veneers are clipped and spliced, and then the different layers (as per the required thickness) are laminated together in a hot press to make the mother ply board using a boiled water resistant glue line as the substrate for the decorative plywood.

Decorative hardwood veneers are usually sliced much thinner than 2mm and are generally 0.55mm. The veneer pieces are clipped and spliced to a usable width. The decorative veneers are then laminated to the mother board using the hot press using a boiled water resistant glue line.

After the final finish, these are segregated as per species and then graded as per different quality standards. This process is replicated across more than 400 types of our veneers and brought to you to choose from.

QUALITY CERTIFICATION



By controlling the entire process, from the sourcing of raw materials to the finished product and customer service, we've created a process that brings in a high degree of transparency and trust within the business cycle.

Over the years, we have developed certification standards that ensure that our customers get the most superior quality of products each time. The Veneer Quality Certification ensures that when you select any veneer from our catalogue, it has been created to last for a generation.

veneER SHOWROOM

935, Bhagwandas Wadi, Behind Kismet
Talkies, Off Veer Savarkar Marg,
Prabhadevi, Mumbai 400025
Tel. 91-22-2431 8666 / 8777
Email: sales@jalaramtimber.net

corIAN SHOWROOM

Agar Bazaar, S.K Bole Road, Near Siddhivinayak
Temple, Dadar, Mumbai 400028.
Tel. 91-22-2430 4352 / 0342, 2431 8444 / 8555.
Fax. 91-22-2422 4733
Email: corian@jalaramtimber.net

FACTORY

Vettickal P.O., Mulanthuruthy (VIA),
Ernakulam (DIST), Kerala 682314

www.jalaramtimber.net