



BRICK BROWN
VENEER
COLLECTION
2021



THE BRICK BROWN VENEER COLLECTION

The Brick Brown Veneer Collection features a variety of veneers that range from rustic red to deep caramel. Our experience and expertise of over 45 years gives us the ability to create the highest quality veneers with unmatched service standards in the industry.

Species	Bubinga, Rosewood, Okume, Makore, Mahogany, Sapeli, Ebony, Sequoia
Dimensions	Thickness: 0.6 mm Width: 100 mm and up Length: 500 - 3500 mm
Moistness	6 - 8%
Cutting Methods	Quartered or Plain Slicing
Packing	Veneer is shipped in bundles, 32 veneer sheets same size per bundle. Each bundle has the label, indicating species, dimensions of veneer sheets in the bundle (length, width), overall quantity of veneers in bundle and grade. Veneer bundles are shipped on pallets. Bundles on pallet are covered by Polyethylene film.



BUBINGA

Bubinga is a popular hardwood from Central Africa and has a close resemblance to Rosewood. It is reddish or pinkish brown with purple veins.



CENTRAL AFRICAN ROSEWOOD

A wonderful wood that delivers a rich balanced tone, similar in sound to Mahogany with the slightest touch of Rosewood creeping in, making it a fantastic all round performer.





OKUME CROTCH

Native to West Africa, especially from Gabon & Congo. A mature Okume tree can produce upto 2000 seeds. This veneer is sliced from the portion of the tree where it branches out creating twisted grains. The tension is seen in the veneers, therefore it is highly sliced. It is light pinkish in color with lustrous texture and extremely decorative characters.



MAKORE POMMELE

Contrary to popular opinion, this species is rare and becoming more so each day. The chestnut tree is simply not a species that is known for producing large, clean burls. Our Chestnut Burl wood veneer sheets have a pleasant array of tan and warm brown colors.



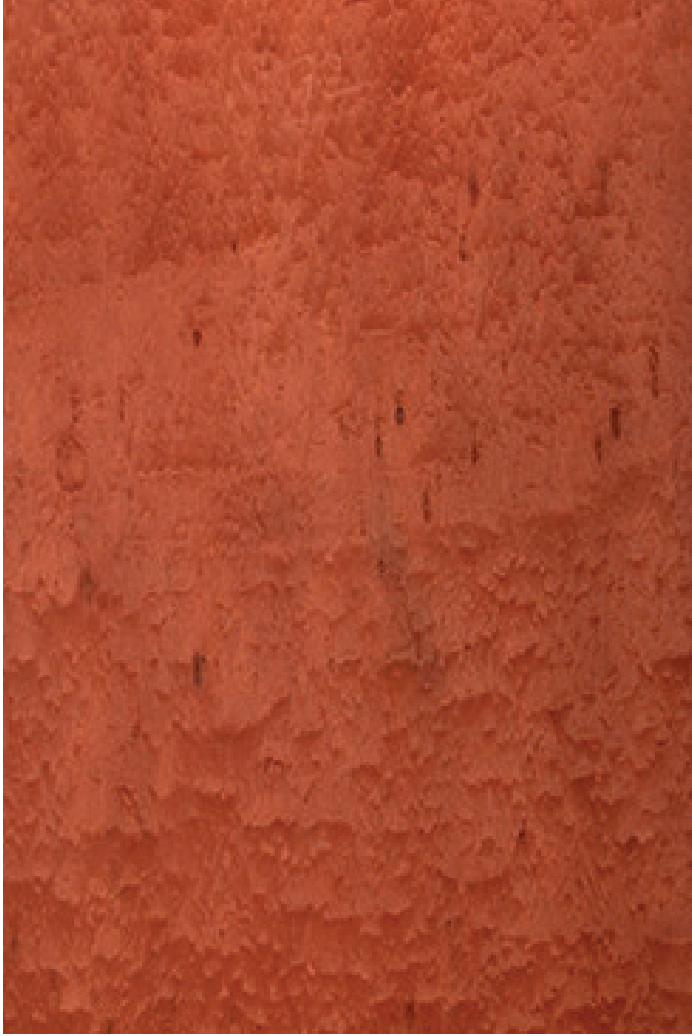
MAKORE FIGURED

Makore is a tall exotic hardwood from West Africa that grows upto 200ft. It is pinkish to reddish brown and the rippled effect in the grain makes it figured.



MAKORE BLOCK FIGURED





MOABI POMMELE

One of the largest trees in equatorial Africa, this tropical hardwood's immense size ensures large leaves and volumes of veneer well suited for architectural use.

Regarded for its shimmering lustre that refracts light, this species ranges from pinkish brown to rich red in color with a fine, even texture, and a typically straight grain that may be decorated with a wide range of widely variable figures, including a highly prized pommele. As with most veneers, almost every log is unique.



MAHOGANY CROTCH

Mahogany Crotch are obtained from the forks of the trees. The colouring becomes more and more beautiful with age and nobler in appearance.

Due to the growth form of the crotch, the interlocking grain is more pronounced.



SAPELI POMMELE

Due to the unique growing pattern of this tree, its wood provide a pattern which is almost figured and as a result particularly attractive.



SAPELI CLUSTER



ANZEM

Colors range from red to rich, warm brown with pinks, black and purple. Fine lines and interesting patterns are present. Anzem wood works and glues well with little difficulty.



BUBINGA CLUSTER





JATOBA FIGURED



ENGLISH CEDAR

Natural resistance to termite, rot and decay make it an ideal choice for outdoor applications. The appealing dark colour, light weight and soft texture makes it suitable for various interior applications as well.



EBONY

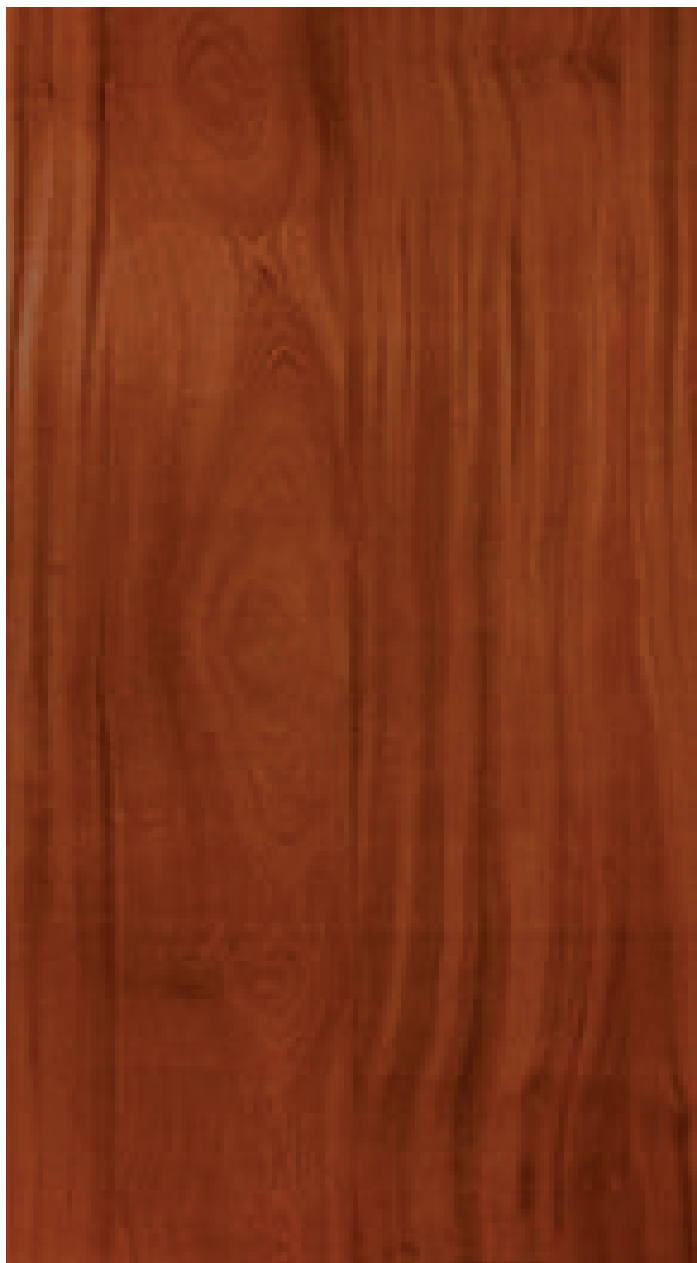
Due to its hardness and density, it is one of the rare kinds of wood that does not float on top of the water. It is finely-textured and has a mirror finish when polished, making it valuable as an ornamental wood. The heartwood excels in fineness and in the intensity of its dark colour. Ebony is a large tree attaining a height of 80ft.



VAVONA BURL

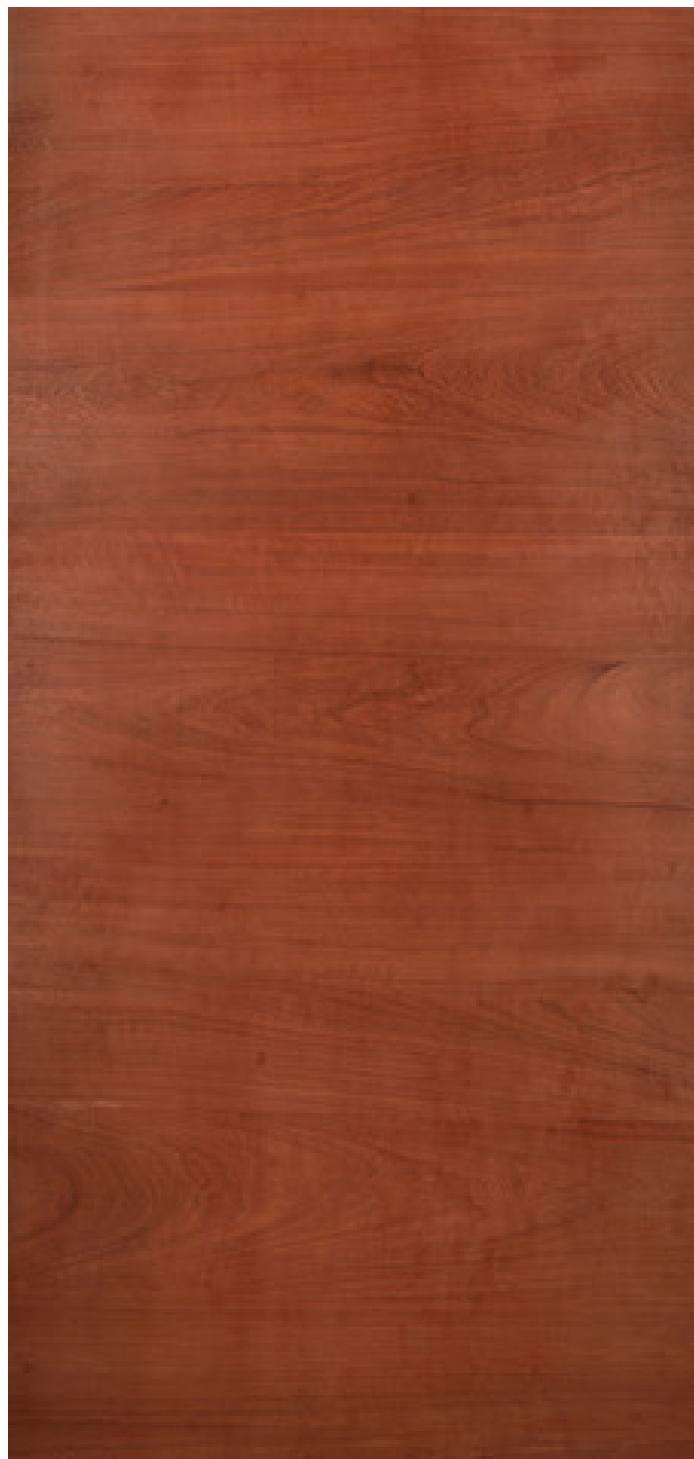
Vavona burl is so exotic looking it is hard to believe it originates from the massive root area of what is commonly called sequoia. The alignment of the fibers is very irregular and the burl is gnarled.





SAPELI

Sapeli also known as African Mahogany is a long tree 150' tall from West Coast Africa. It is golden to dark reddish brown. Color tends to darken with age. Besides the common ribbon pattern, Sapeli is also known for a wide variety of other figured grain patterns. Grain is interlocked, and sometimes wavy. Fine uniform texture and good natural luster. Sapeli has a distinct, cedar-like scent while being worked.



DOUKA



A LEGACY OF TRUST



Natural Wood & Veneers - Kochi

Established in 1977, Jalaram Timber Depot started with a simple mission -- to preserve the quality and craft in harvesting the finest wood from around the world and to bring it to India in its most suitable form to find a place in your home or work environment.

Today we are proud to have over 40 years of expertise across not just veneers, but also wooden flooring, plywood and solid surfaces. Jalaram Timber Depot has consistently set the standard for these products in India and we're happy to say that we continue to do so every day.

Our extensive range of veneers are closely evaluated and curated from around the world, using the best of local materials as well as international woods.

Much like timber that needs the best conditions to grow, we have nurtured strong relationships and built a reputable network of timber suppliers across the globe, which gives us access to the highest quality of materials.

We also lead the market in solid surfaces -- Jalaram Timber Depot was the first to introduce Dupont™ Corian® Solid Surface in India, among several other brands that we are proud to partner with.

We are the authorized distributor for the Western Region for Parador -- a premium wooden flooring brand from Germany. Our plywood range is curated and certified; any brand endorsed by Jalaram Timber Depot meets the top quality standards since we go through stringent testing processes and set the quality bar for the industry.



Jalaram Timber Depot has its own veneer manufacturing unit in Kerala with over 400 varieties of veneers, which allows us to monitor and maintain a certain level of quality.

Spread over 6 acres at Vettickal, Mulanthuruthy in Ernakulam District, our state-of-the-art factory is equipped with a fully fledged slicing and peeling facility and kiln drying chambers.

The factory also houses our showroom that carries a large variety of wood, veneers and flooring products.

The Veneer Studio at Central Mumbai is designed to showcase our collection of veneers, floorings, solid surfaces, deck & cladding, kiln dried timber, live tree slabs and plywood. We're ready to welcome you.

SUSTAINABILITY & OUR FOOTPRINT



At Jalaram Timber Depot, we take our responsibility to the planet seriously. Without exception, all our raw materials are sourced from sustainable forests which are FSC and PEFC certified. In the case of imported logs and veneers, we ensure they are also sourced from FSC and PEFC certified producers, thus ensuring the ecosystem we engage with shares similar values that are important to us.

FSC and PEFC certifications are carried out with regular auditing and inspections to ensure the sustainability criteria are strictly carried out by independent authorities.

In the case of logs sourced from India, our main purchases are from Government Forest Department auctions or from plantations (replanted) which are controlled by permissions by the concerned Government Forest Department.

The Forest Department allows only collection in their forest of dead and fallen logs. Thus, we ensure non exploitation of natural products and the best use of available resources in a sustainable way.

THE PROCESS

Producing veneer is a combination of art and science. Once we select the wood based on aesthetic attributes and established parameters, we ensure it is treated correctly to preserve its features.

The manufacture of decorative veneers, decorative plywood, softwood or hardwood plywood consists of nine main processes:

Log Storage

Log Debarking And Bucking

Heating Logs

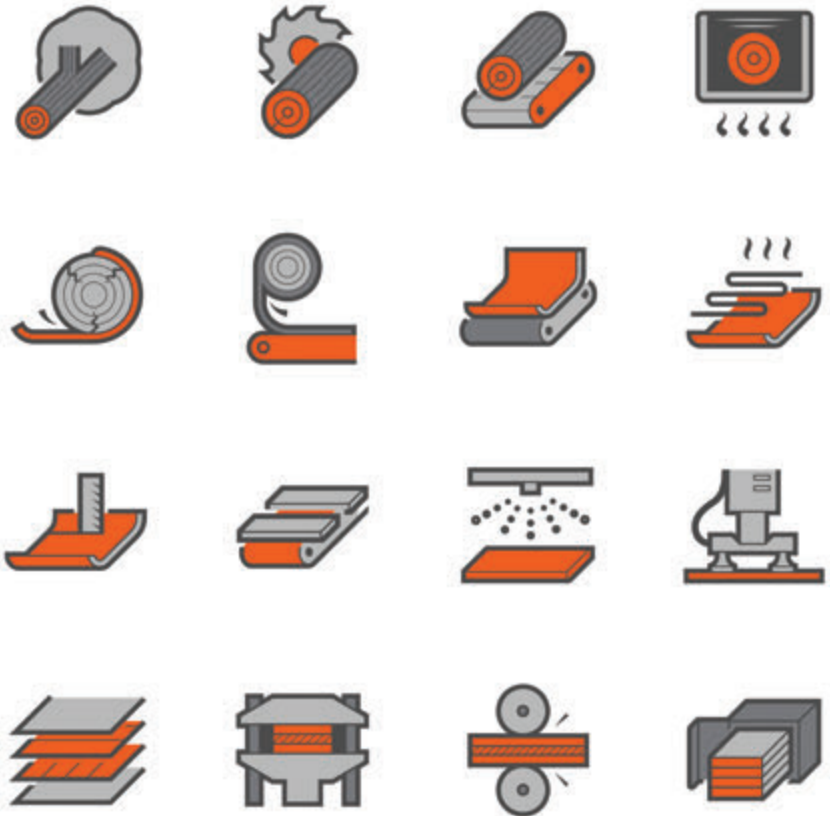
Slicing And Peeling

Drying

Glueing

Pressing In Hot Press

Plywood Cutting & Finishing
 (such as Sanding)



The initial step of Debarking is accomplished by feeding logs through one of several types of debarking machines. The purpose of this operation is to remove the outer bark of the tree without substantially damaging the wood.

After the bark is removed, the logs are cut to appropriate lengths in a step known as bucking. Decorative logs are sawn into flitches, as per the requirement of annual rings and patterns, such as crown or quarter patterns.

The logs for peeling (done by rotary cutting) and the flitches for decorative veneer are then heated to improve the cutting action of the veneer lathe or slicer, thereby generating a product with better surface finish. Blocks are heated to around 93°C using a variety of methods – hot water baths, steam heat, hot water spray or a combination of the three.

After heating is complete, the logs and flitches are processed to generate veneer. A veneer lathe is used for rotary peeling of different layers of the mother board, but decorative high quality veneer is generated with a veneer slicer.

The slicer and veneer lathe both work on the same principle. The wood is compressed with a nosebar while the veneer knife cuts the blocks into veneers that are typically 0.5mm to 3.0mm thick. This thickness ensures that the veneer lasts for a long period of time in its final application.

The rotary peeled veneers are clipped and spliced, and then the different layers (as per the required thickness) are laminated together in a hot press to make the mother ply board using a boiled water resistant glue line as the substrate for the decorative plywood.

Decorative hardwood veneers are usually sliced much thinner than 2mm and are generally 0.55mm. The veneer pieces are clipped and spliced to a usable width. The decorative veneers are then laminated to the mother board using the hot press using a boiled water resistant glue line.

After the final finish, these are segregated as per species and then graded as per different quality standards. This process is replicated across more than 400 types of our veneers and brought to you to choose from.

QUALITY CERTIFICATION



By controlling the entire process, from the sourcing of raw materials to the finished product and customer service, we've created a process that brings in a high degree of transparency and trust within the business cycle.

Over the years, we have developed certification standards that ensure that our customers get the most superior quality of products each time. The Veneer Quality Certification ensures that when you select any veneer from our catalogue, it has been created to last for a generation.

veneER SHOWROOM

935, Bhagwandas Wadi, Behind Kismet
Talkies, Off Veer Savarkar Marg,
Prabhadevi, Mumbai 400025
Tel. 91-22-2431 8666 / 8777
Email: sales@jalaramtimber.net

corIAN SHOWROOM

Agar Bazaar, S.K Bole Road, Near Siddhivinayak
Temple, Dadar, Mumbai 400028.
Tel. 91-22-2430 4352 / 0342, 2431 8444 / 8555.
Fax. 91-22-2422 4733
Email: corian@jalaramtimber.net

FACTORY

Vettickal P.O., Mulanthuruthy (VIA),
Ernakulam (DIST), Kerala 682314

www.jalaramtimber.net